

ADRIAN, MN • ±200 ACRES OF PRIME NOBLES COUNTY FARM LAND

FARM LAND AUCTION

MONDAY, DECEMBER 3, 2012 • 2:00 P.M.

±200 Acres of Prime Nobles County Farm Land Located in Section 19 and 20, Larkin Township (T-103-N, R-42-W)

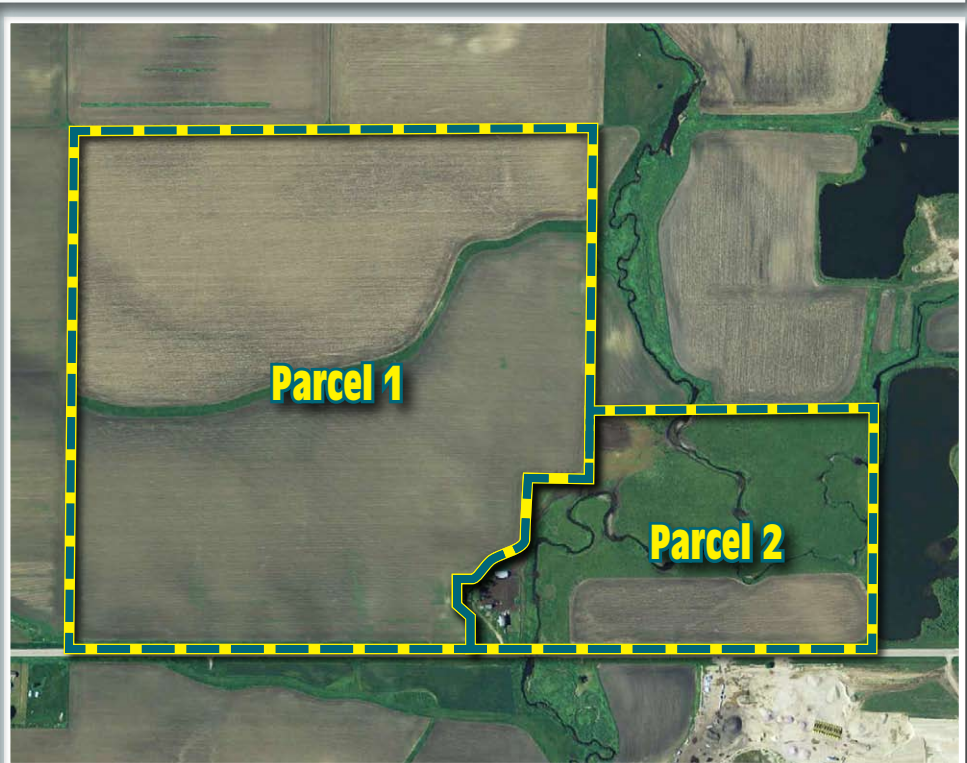
Land Location: Adrian, MN: 4 Miles North on Hwy 19, 1/2 Mile East on paved Co Rd 14/200th St. North Side of Road (*Watch for Henslin Auctions Signs!*)

Auction to be Held at: American Legion Post #32 • Adrian, MN 56110

Parcel 1: ±150 acres of Prime Nobles Co. Farm Land located in Section 19, Larkin Twp, T-103-N, R-42-W (Great Productive Soils!!) Soil Productivity Index at 94.7!!!

Parcel 2: ±50 acres of Farm Land, Pasture and Building Site located in Sections 19 & 20, Larkin Twp, T-103-N, R-42-W

Land will be surveyed by auction date!



FOR AUCTION INFORMATIONAL BOOKLET, CALL HENSLIN AUCTIONS, INC. (320) 365-4120

ALDINE MADISON ESTATE

Auction Terms: To attend auction and receive a bidding number, buyers must present auction company with certified funds of \$75,000 for Parcel 1 or 25,000 for Parcel 2. These funds will be required as non-refundable earnest money for each parcel. Possession of land will be granted after closing. Closing for both parcels, on or before December 27th, 2012. Buyers Premium will apply. For more information call Henslin Auctions, Inc. (320) 365-4120 or visit us at:

www.henslinauctions.com

IN ASSOCIATION WITH



Henslin Auctions, Inc.
(320) 365-4120
Bird Island, MN

LaDon Henslin 65-25
Allen Henslin
Cell: (320) 979-1808
Frank Roering
(320) 290-8490